

GROUPE



PAS

BATO
RAMA

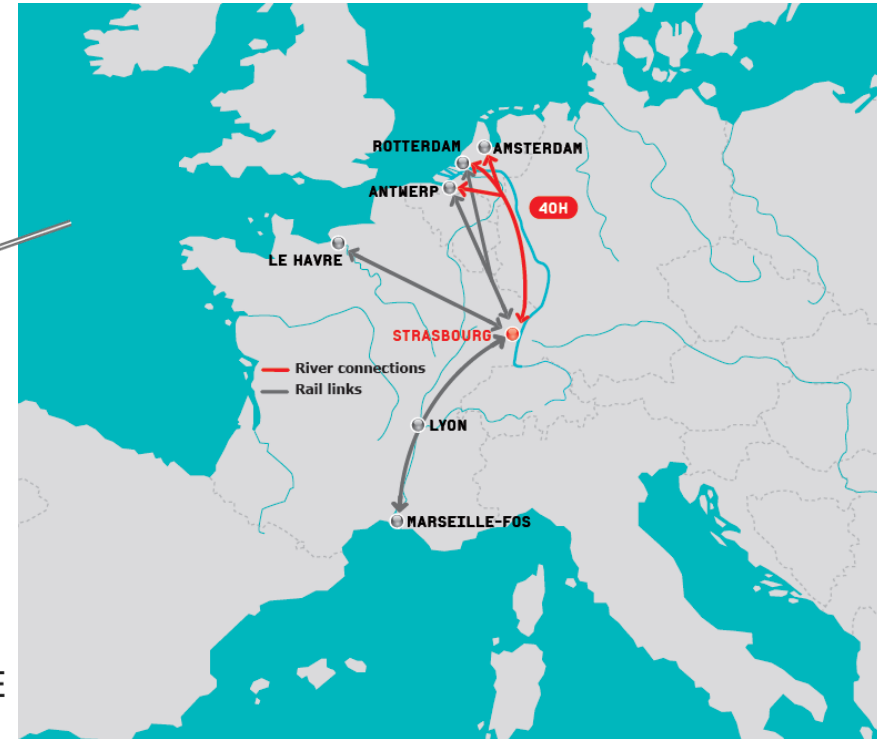
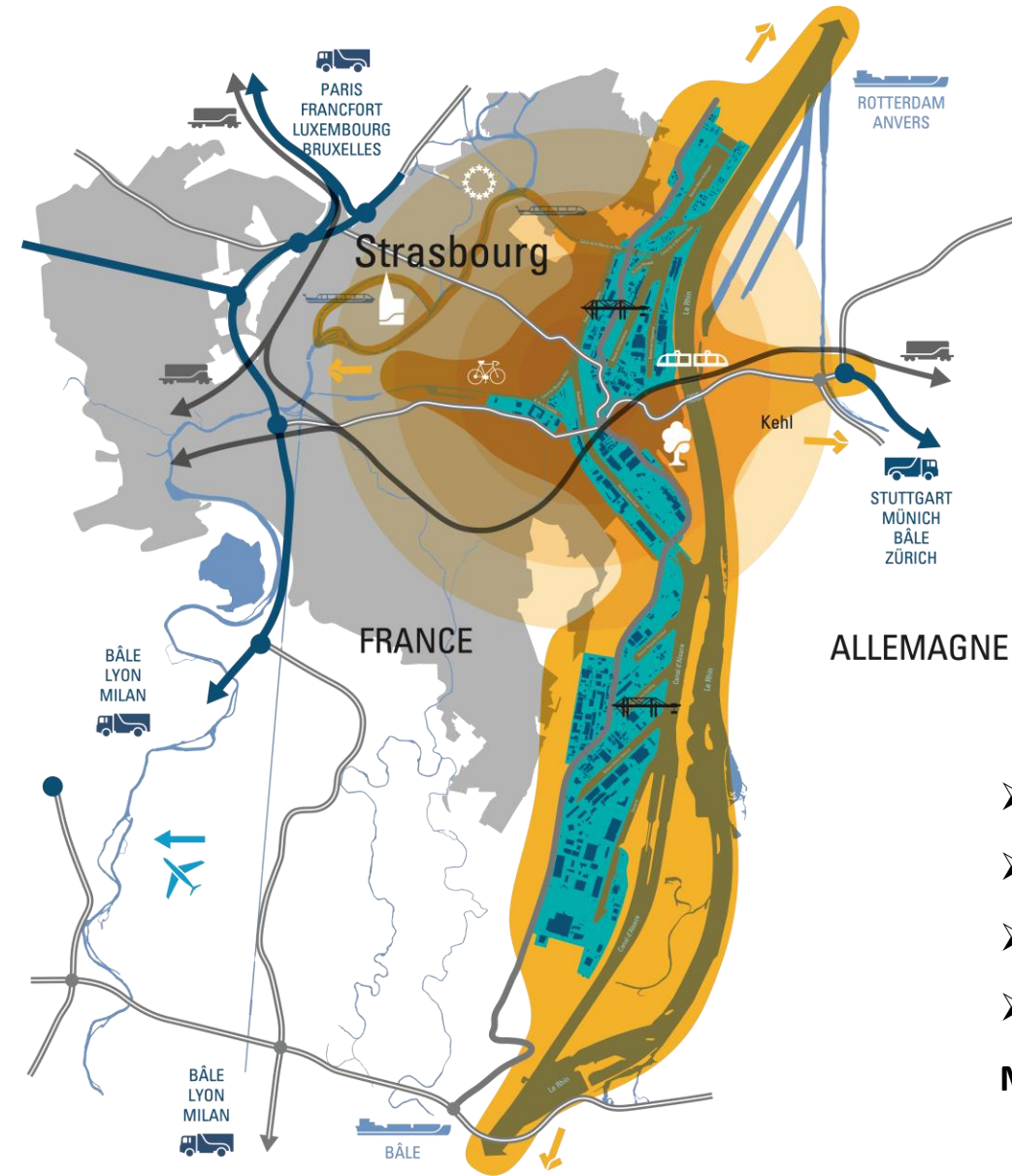


RET

PORTS DE STRASBOURG

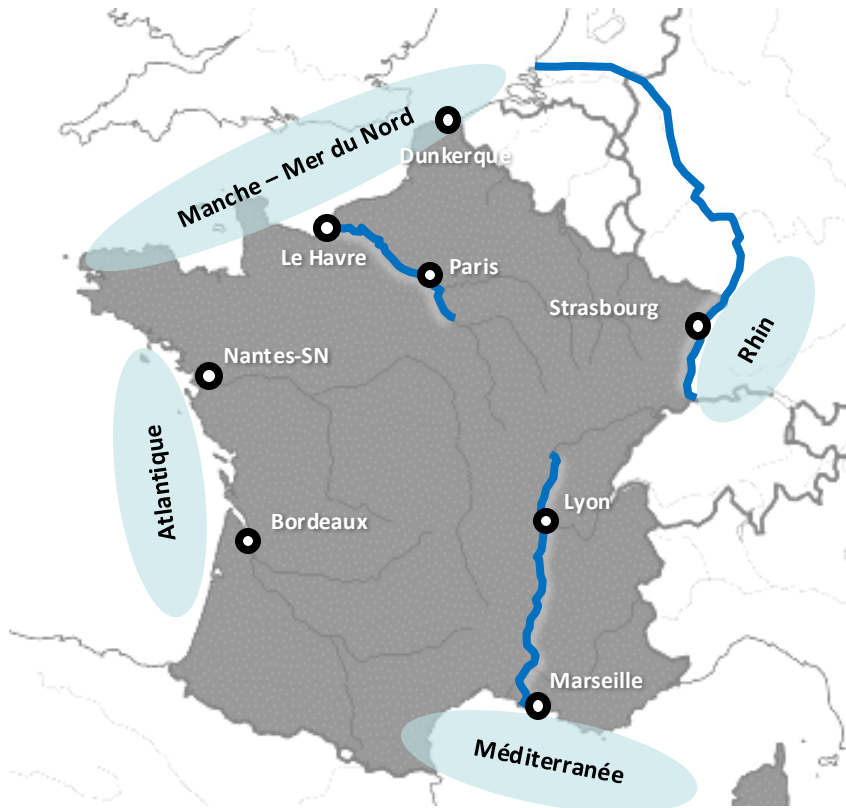
Port of Strasbourg
The leading hub at the heart of Europe
heading for 2030

PORT OF STRASBOURG



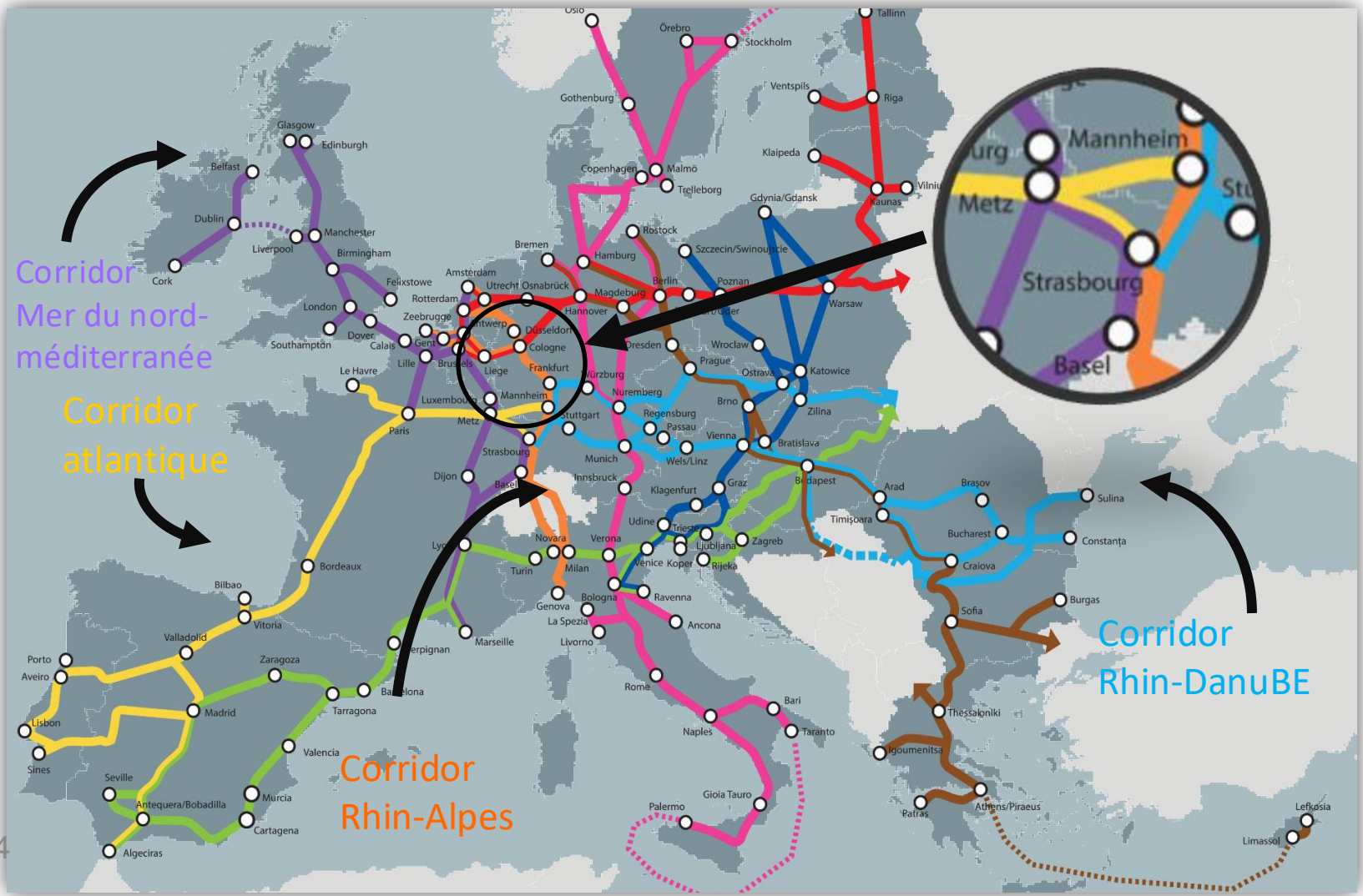
- 2nd largest river port in France
- First economic hub in Strasbourg et around
- and the region 1st freight station in Alsace
- 5th Rhine port (after Duisburg, RheinCargo, Mannheim and Karlsruhe)

A strategic position



- ➔ Positioned on the river Rhine, permitting a source of solutions for business development at the heart of Europe
- ➔ On the national scale : an access to the fourth French riverfront

On the European scale: a strategic position
 At the heart of the Rhine-Alps corridor
 At the intersection of three other corridors (North Sea - Mediterranean,
 Atlantic, Rhine - Danube)



GROUPE



PAS

BATO
RAMA



RET

PORTS DE STRASBOURG

General presentation

RIVER TRAFFIC 2023 TOP 3

Food industry
1,32 MT



Building materials
2,8 MT



Energy products
1,23 MT



Container traffic 2023
342 414 EVP all modes combined
Terminal Strasbourg et Lauterbourg

**2^E INLAND PORT
IN FRANCE**



**6 209 410
TONNES
RIVER TRAFFIC**



100 KM OF RAIL

**971 218
TONNES
RAILWAY TRAFFIC**



**4
PORT SITES**

**STRASBOURG
LAUTERBOURG
BEINHEIM
MARCHOLSHEIM**



**10 KM LONG
1 KM LARGE**

**200
HECTARES
OF BASINS**

**8
LOADING
BERTHS**



Ports of Strasbourg: a leading multimodal hub

1 057 ha in Strasbourg

100 km of rail

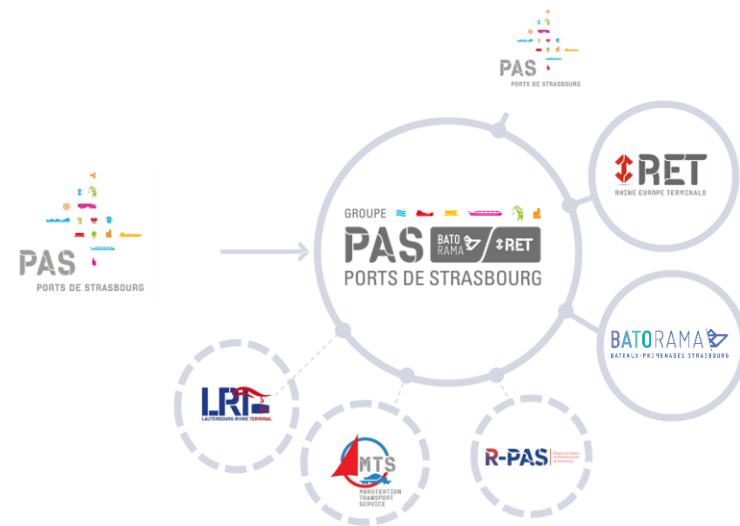
34 km of roads

7 000 000 tonnes/year

3 container terminals

4 European transport corridors

2 subsidiaries 100%:
BATORAMA, RET



Ports of Strasbourg: a leading multimodal hub

500 companies



TIMKEN



10 000 jobs 7% of
employment in
Strasbourg



1 representative
business association:
the GUP



DUMAREY



THE GROUP'S missions

3 historic missions in the service of economic development and river transport:

Management of business spaces

Estate development

Handling operator

Port operation, through its subsidiary RET

Tourist transport operator

Passenger transport, through its subsidiary BATORAMA

**But also : A major player in the decarbonization of the region and its
reindustrialization;**

A multimodal hub on a European scale

A public establishment with atypical status

- A status inherited from history :
- A status resulting from the return of Alsace-Moselle to France in 1918
- A founding document, the "Convention of 20 May 1923 between the State and the City of Strasbourg, relating to the establishment of the Rhine port of Strasbourg as an autonomous port [...]".
- An atypical form of governance, shared between the State and the City of Strasbourg, and involving the local authorities:
- A Board of Directors with equal representation from the State and the City of Strasbourg
- A board chaired by a representative of the city and vice-chaired by a representative of the State
- A director appointed by the State after consultation with the town council
- A twinning arrangement with the port of Kehl, inherited from the Second World War and then from German reunification in 1990-1992 with also recently a new common strategy based on 5 pillars : economic development, decarbonation, massification of transport flows, outreach of ports, soft mobility



organisation du groupe pas



A new strategic plan with modernised governance approved the 13th of June 2024 !

the 4 GUIDELINES of the strategic project

"the largest French port on the Rhine and the most European of French ports cultivating excellence and cooperation at the service of the regions and those who bring them to life"



a key player..



with modernised governance

OBJECTIVE

THE DEVELOPMENT ADVISORY BOARD



To organise and structure consultation on the development of the SAP with the entire region and the port ecosystem;

Prefigure future changes in governance;

To be able to consult on strategic projects AND MATTERS

GROUPE



PAS

BATO
RAMA



RET

PORTS DE STRASBOURG

FOCUS ON TRANSITIONS

STRATEGIC VISION TRANSITIONS

“A key player in transitions”

- **Build its action around a CSR (Corporate Social Responsibility) approach**
 - Create favorable conditions for the logistics ecosystem and CSR among ZIP companies
 - Adapting to climate change, water and soil: optimizing use, improving and preserving
 -

- **Developing a low-carbon industrial port zone**

Implementing the ZIBAC project, now accredited

- Initiate and complete the ZIBAC approach (CLES 2050 project)
- Build a decarbonization path for the port area
- Assess the potential for developing renewable energy production in the port area
- Continue and expand the CLES industrial and territorial ecology initiative
- Draw up a port-wide energy master plan
- Continue to develop the R-PAS project to recover waste heat from industrial activities in the port area
- Continue and expand the PEPS initiative to promote active mobility
- Reinforce monitoring and surveillance of air quality in the port area

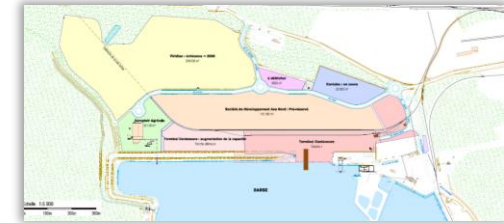


STRATEGIC VISION TRANSITIONS

- **Developing decarbonized industrial and logistics activities**

Hosting energy and industrial transition projects

- Make the Lauterbourg site an industrial and logistics platform dedicated to decarbonizing the economy
- Contribute to development of experimental projects in the port area



- **Make the Port of Strasbourg the hub of carbon-free transport on the Rhine**

Contribute to the greening of the river (and rail) fleet

- Renew and decarbonize the cruise ship fleet
- Provide the station and river cruise stops with electrical connection terminals
- Evaluate the potential for production and use of alternative fuels
- Promote decarbonization of road transport in the port area

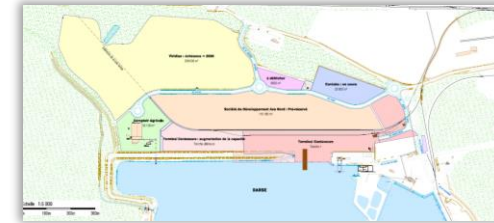


STRATEGIC VISION TRANSITIONS

- **Developing decarbonized industrial and logistics activities**

Hosting energy and industrial transition projects

- Make the Lauterbourg site an industrial and logistics platform dedicated to decarbonizing the economy
- Contribute to development of experimental projects in the port area



- **Make the Port of Strasbourg the hub of carbon-free transport on the Rhine**

Contribute to the greening of the river (and rail) fleet

- Renew and decarbonize the cruise ship fleet
- Provide the station and river cruise stops with electrical connection terminals
- Evaluate the potential for production and use of alternative fuels
- Promote decarbonization of road transport in the port area

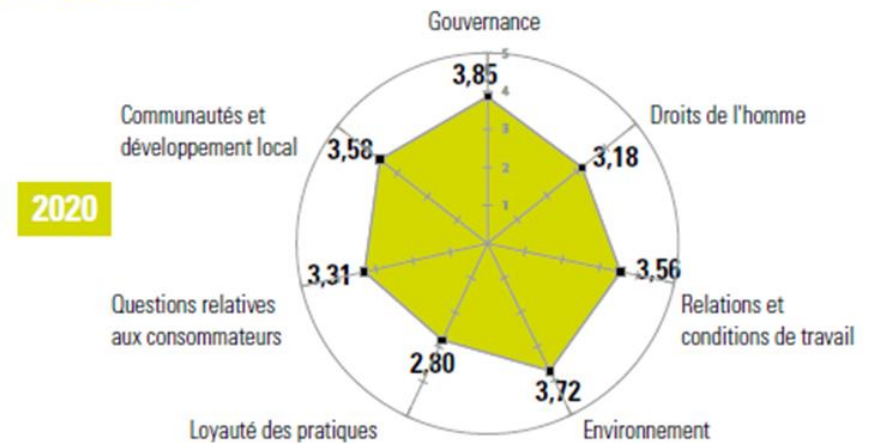
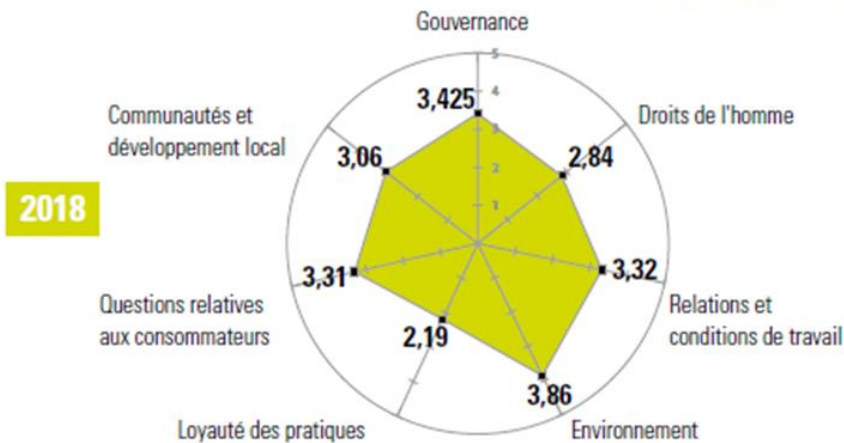


CSR Strategy

The Port of Strasbourg has been committed to CSR since 2016.

In 2018 and 2020, the PAS was assessed by an independent third-party organization, Bureau Veritas, and the scores obtained make it possible to see the progress in terms of responsible commitment.

SCORING PAR QUESTION CENTRALE



CORPORATE SOCIAL RESPONSIBILITY

2024: the Port of Strasbourg wishes to broaden its scope of action in terms of CSR to include its subsidiaries (RET, Batorama, LRT).

Summer 2024: launch of a CSR (Corporate Social Responsibility) initiative as a public structure

Objective: Create favorable conditions for the logistics ecosystem and CSR of companies in the port's industrial zone, in the context of the European green deal.

--> **Definition of the CSR strategy...**

- CSR diagnosis: the challenges facing PAS and its ecosystem (based on a double materiality matrix)
- Roadmap co-constructed with stakeholders
- Extended scope: RET, Batorama and LRT

--> **... serving the social responsibility of companies in the area**

- The Port as a carrier of responsible solutions (multimodality, EIT, CLES 2050, etc.)
- Tools and resources put in place to create favorable conditions for corporate CSR (Club Entreprises RSE, CSR clauses in contracts/leases, etc.).



A leading port in energy transition

CLES

An **Industrial and Territorial Ecology (ITE)** approach

Launched in **2013**

33 entreprises adhérentes en 2024

Stakeholders :

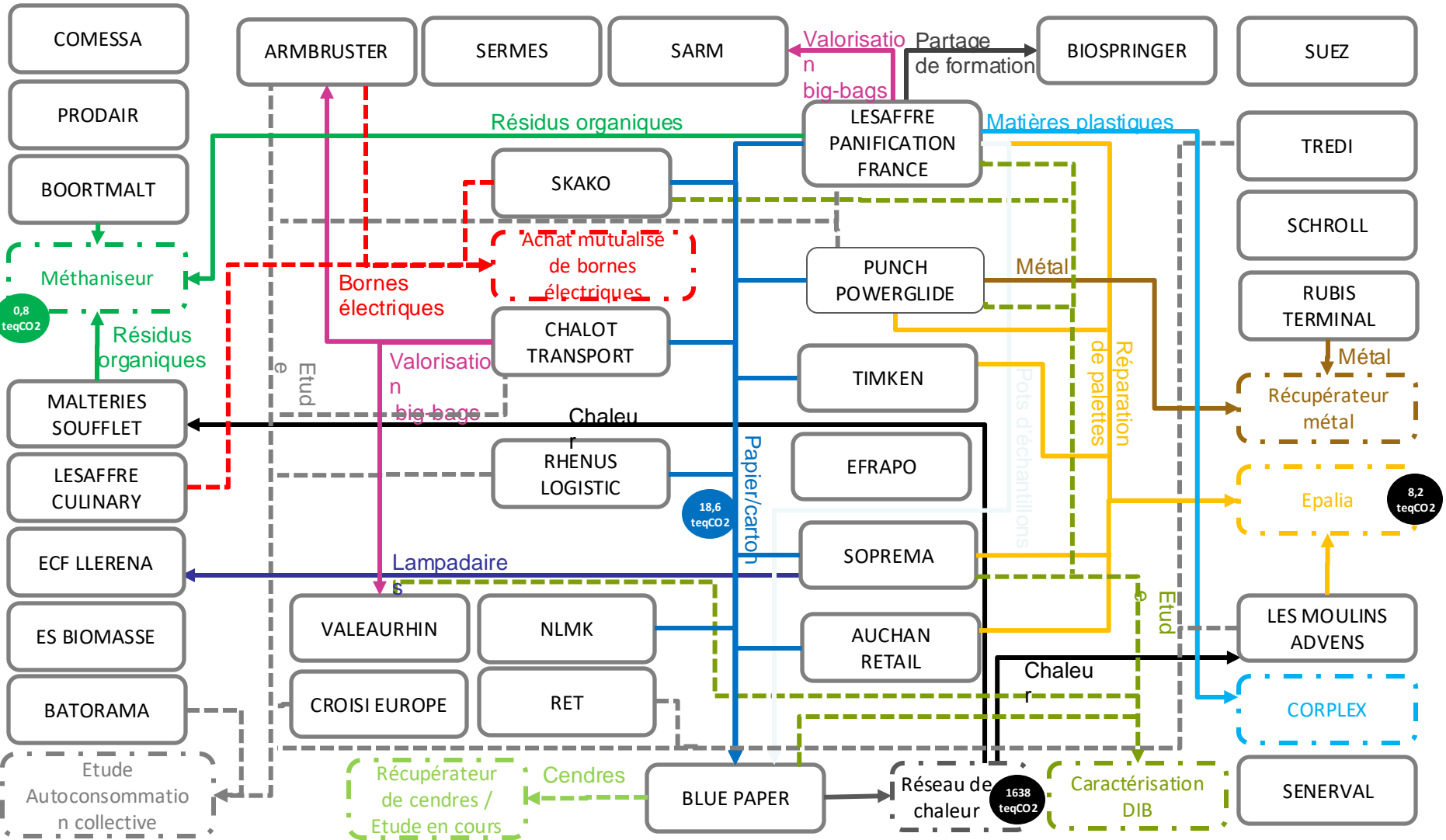


Avec le soutien de



CLES

Coopérations Locales
et Environnementales en Synergies
PORTS DE STRASBOURG



ZIBAC application (low-carbon industrial zone - ADEME)

ADEME call for projects to decarbonize industrial zones

Financing of studies over 2 years

Rate of assistance: 50 %

CLES 2050

- Répondre aux objectifs de la Stratégie Nationale Bas Carbone en réduisant de 81% les émissions industrielles de la ZIP de Strasbourg d'ici 2050
- Structurer une stratégie globale de décarbonation de la ZIP de Strasbourg
- S'appuyer sur la dynamique CLES pour développer de nouvelles synergies axées sur les enjeux de décarbonation
- Structurer de nouvelles filières au service du projet de transformation du territoire

Consortium :



**Project value:
1,19 M€**

2015-2018

Partnership agreements to carry out studies aimed at updating the status of the main energy flows and proposing innovative energy solutions that can be implemented.



2020

Creation of the R-PAS joint venture:



82%



10%



8 %

Waste heat recovery at Blue Paper to supply neighborhoods, buildings (Rhena clinic, Rhine port school) and other industries (Les Moulins Advens and La Société des Malteries d'Alsace).

- ✓ 6 km of network built
- ✓ 7 GWh recovered in 2021, i.e. 1,638 tonnes of CO2 eq avoided
- ✓ 21 GWh recovered in 2022, i.e. 4,914 tonnes of CO2 eq avoided



Project to recover waste heat from 2 other industrial plants



GROUPE



PAS

BATO
RAMA



RET

PORTS DE STRASBOURG

THANK YOU